

CORRECTION

Open Access

Correction to: Ultra-high field MR angiography in human migraine models: a 3.0 T/7.0 T comparison study



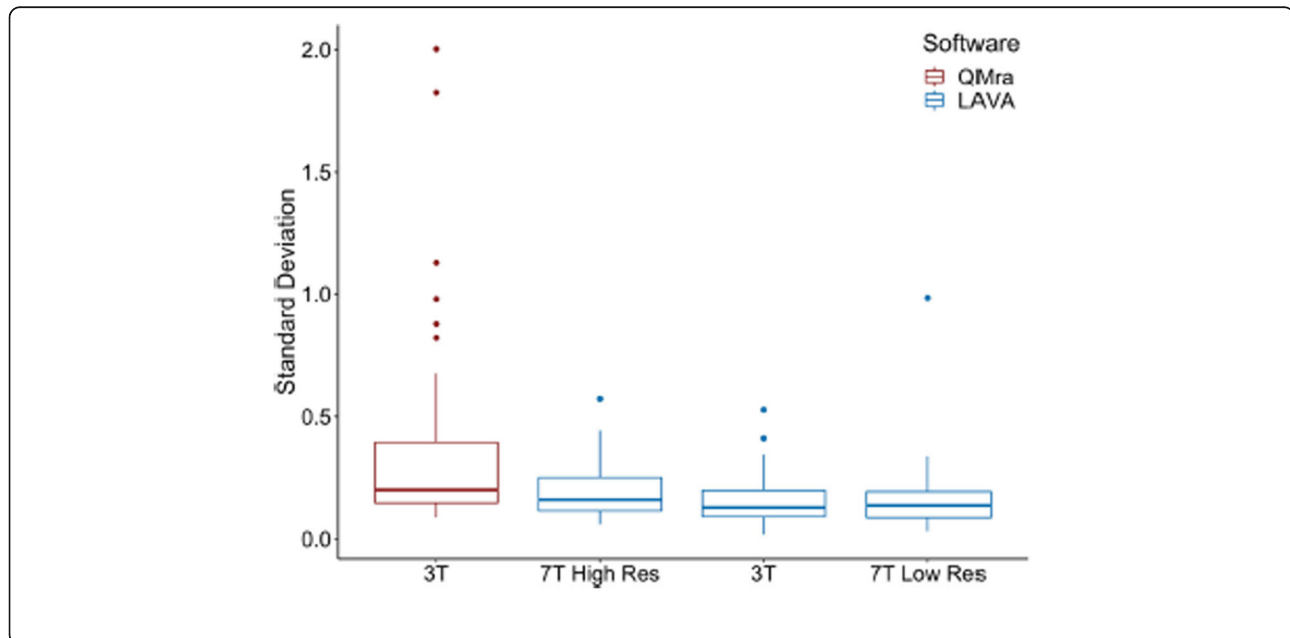
Casper Emil Christensen¹, Samaira Younis¹, Ulrich Lindberg², Vincent Oltman Boer³, Patrick de Koning⁴, Esben Thade Petersen^{3,5}, Olaf Bjarne Paulson⁶, Henrik Bo Wiberg Larsson², Faisal Mohammad Amin^{1†} and Messoud Ashina^{1*†}

Correction to: J Headache Pain

<https://doi.org/10.1186/s10194-019-0996-x>

After publication of the original article [1], the authors have notified us that an updated version of Figures 1, 2 and 3 should have been published. The incorrect and revised figures can be found below.

Incorrect figures:



* Correspondence: ashina@dadlnet.dk

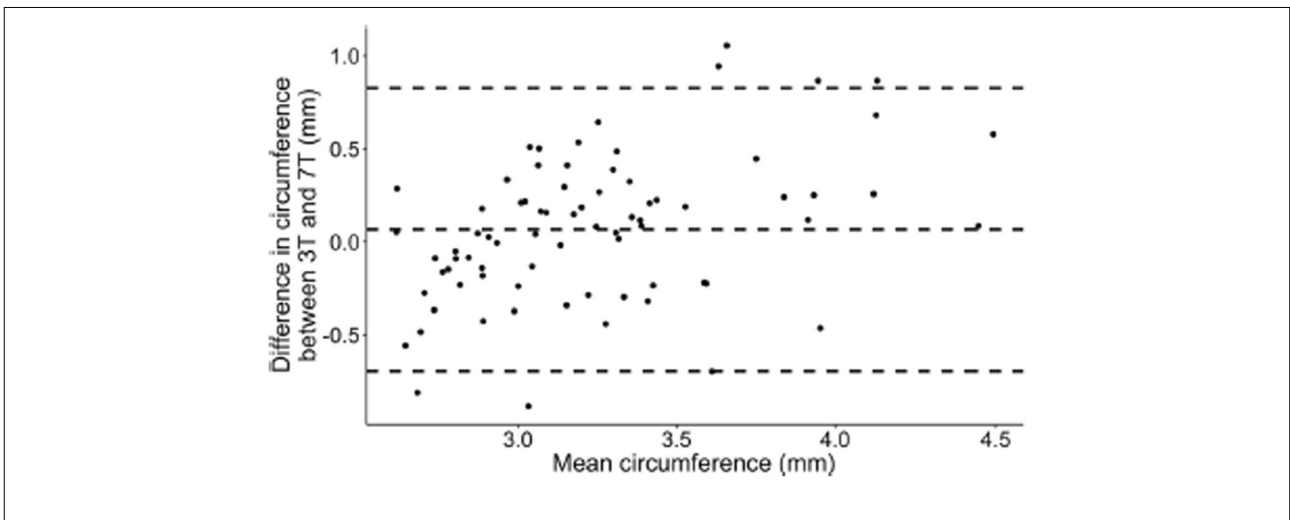
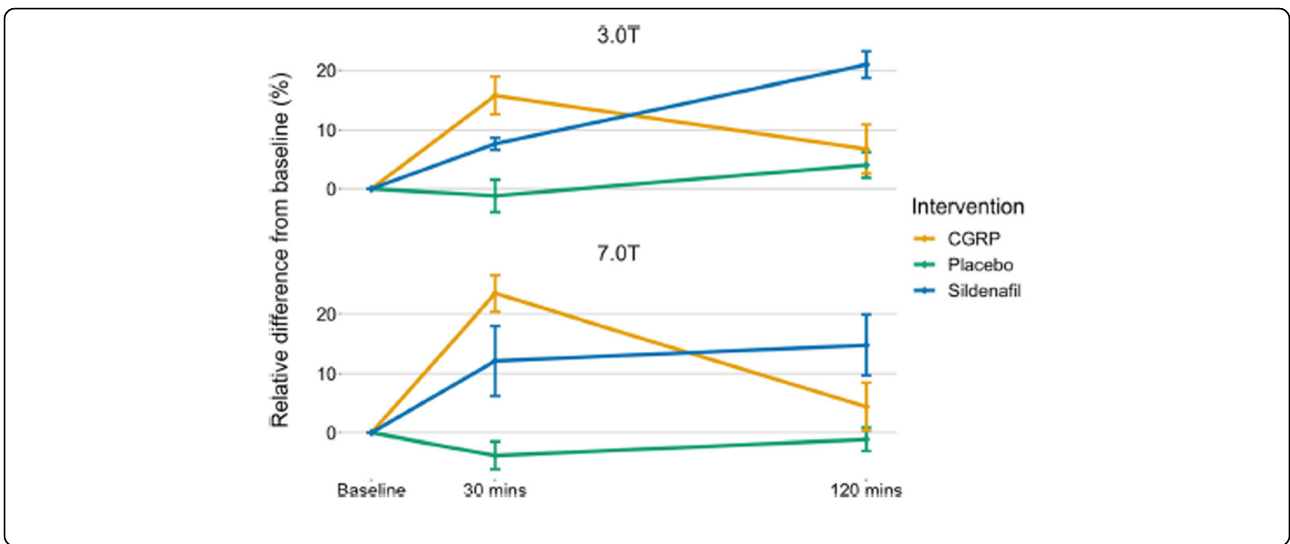
The original article can be found online at <https://doi.org/10.1186/s10194-019-0996-x>

†Faisal Mohammad Amin and Messoud Ashina contributed equally to this work.

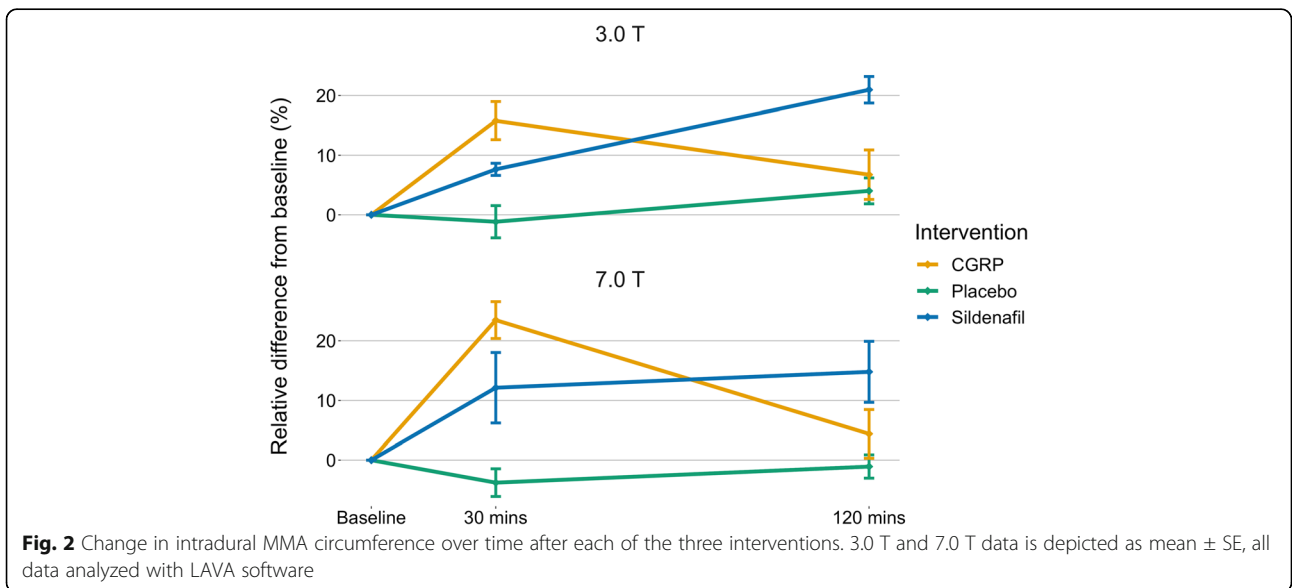
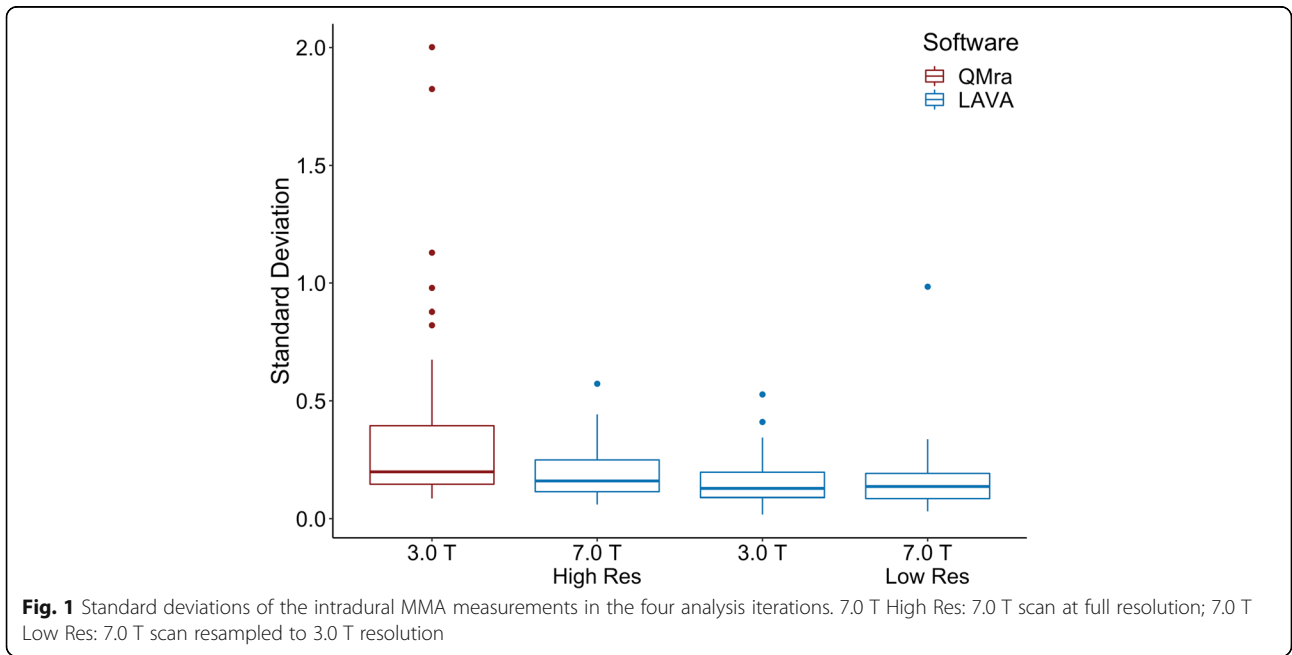
¹Danish Headache Center and Department of Neurology, Rigshospitalet Glostrup, Faculty of Health and Medical Sciences, University of Copenhagen, Valdemar Hansens Vej 5, 2600 Glostrup, Denmark

Full list of author information is available at the end of the article





Revised figures:



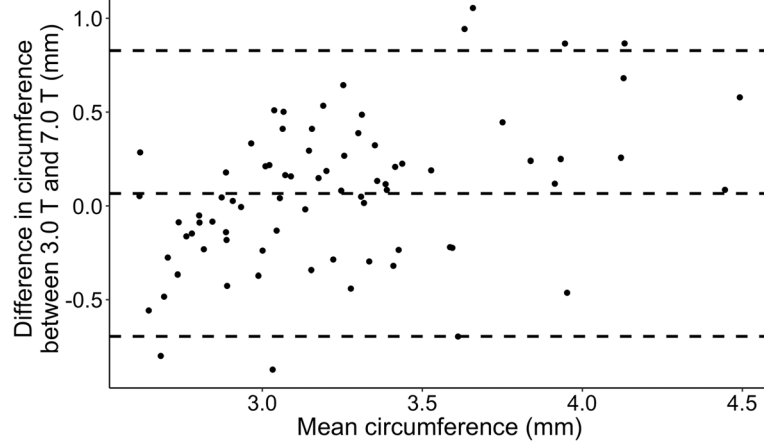


Fig. 3 Bland-Altman plot depicting agreement between circumference measurements of intradural MMA 3.0 T vs 7.0 T within subject, within drug, within time point analyzed with LAVA software. Each point represents difference in circumference between 3.0 T and 7.0 T as a function of mean of the two measurements. Dashed lines are overall mean of differences $\pm 2SD$

The original article has been corrected.

Author details

¹Danish Headache Center and Department of Neurology, Rigshospitalet Glostrup, Faculty of Health and Medical Sciences, University of Copenhagen, Valdemar Hansens Vej 5, 2600 Glostrup, Denmark. ²Functional Imaging Unit, Department of Clinical Physiology, Nuclear Medicine and PET, Rigshospitalet, Faculty of Health and Medical Sciences, University of Copenhagen, Copenhagen, Denmark. ³Danish Research Centre for Magnetic Resonance, Centre for Functional and Diagnostic Imaging and Research, Amager and Hvidovre Hospital, Copenhagen, Denmark. ⁴Division of Image Processing, Department of Radiology, Leiden University Medical Center, Leiden, Netherlands. ⁵Center for Magnetic Resonance, Department of Health Technology, Technical University of Denmark, Kgs Lyngby, Denmark. ⁶Neurobiology Research Unit, Department of Neurology, Rigshospitalet Blegdamsvej, Faculty of Health and Medical Sciences, University of Copenhagen, Copenhagen, Denmark.

Received: 13 May 2019 Accepted: 13 May 2019

Published online: 28 May 2019

Reference

1. Christensen et al (2019) Ultra-high field MR angiography in human migraine models: a 3.0 T/7.0 T comparison study. *J Headache Pain* 20:48. <https://doi.org/10.1186/s10194-019-0996-x>