

Cutaneous innervation and trigeminal pathway function in a patient with facial pain associated with Parry-Romberg syndrome

M. Falla · A. Biasiotta · G. Fabbrini ·
G. Cruccu · A. Truini

Received: 27 March 2012 / Accepted: 5 May 2012 / Published online: 24 May 2012
© The Author(s) 2012. This article is published with open access at Springerlink.com

Abstract Parry-Romberg syndrome (PRS) is a rare condition manifesting with progressive hemifacial atrophy. Although reported PRS clinical disturbances include facial pain and recent studies raised the possibility that PRS-related pain is a neuropathic pain condition due to the trigeminal nerve damage, no studies have directly investigated cutaneous innervation and trigeminal pathway function in patients with this rare condition. In a 50-year-old woman presenting with a 10-year history of slowly progressive hemifacial atrophy and facial pain, we investigated large myelinated fibres with masticatory muscle electromyography and trigeminal reflexes, and tested small myelinated and unmyelinated fibres with laser-evoked potentials. We also investigated cutaneous innervation by measuring the intraepidermal nerve fibre (IENF) density after skin biopsy of the supraorbital regions. We found that neurophysiological data and IENF density came within normal ranges, with no differences between normal and affected side. Our study showing that the standard reference techniques for assessing cutaneous innervation and trigeminal pathway function disclosed no abnormalities in this patient with PRS suggest that this rare and disabling condition is not associated with trigeminal system damage. These findings indicate that in this patient PRS-related pain is not a neuropathic pain condition, rather it probably arises from the musculoskeletal abnormalities.

Keywords Parry-Romberg syndrome · Hemifacial atrophy · Trigeminal nerve

Introduction

Parry-Romberg syndrome (PRS) is a rare condition manifesting with progressive hemifacial atrophy involving skin, soft tissue, and bone. Reported PRS clinical disturbances include facial pain [1, 2]. The documented inflammatory changes in the brain parenchyma and vessel walls, occasional coexisting autoimmune disorders and clinical improvement following immunosuppression suggest that PRS could be an immune-mediated disease [3]. Despite recent studies suggesting that PRS-related pain is a neuropathic pain condition due to trigeminal nerve damage, no studies have directly investigated cutaneous innervation and trigeminal pathway function in patients with this rare condition. Having this information might help to understand the underlying causes of PRS, thus opening the way to a therapeutic approach.

Case presentation

A 50-year-old woman presented with a 10-year history of slowly progressive hemifacial atrophy associated with facial pain. Her medical history was unremarkable except for high blood pressure. Clinical examination showed facial asymmetry with marked hypoplasia involving the right face, and right enophthalmos. The patient complained of a dull, aching pain affecting the right face. Pain was continuous, deeply and poorly localised, mainly distributed to the supra- and peri-orbital regions, temple, ear, and zygomatic area. Pain was mild in intensity, with no significant variations during the day.

M. Falla · A. Biasiotta · G. Fabbrini · G. Cruccu ·
A. Truini (✉)
Department of Neurology and Psychiatry,
Sapienza University, Viale Università 30, 00185 Rome, Italy
e-mail: andrea.truini@uniroma1.it

A. Truini
Don Gnocchi Foundation, Milan, Italy

The remaining clinical and neurological examinations were normal, including a detailed sensory examination using bed-side tools. The soft brush and the pinprick stimulation of the skin did not evoke pains (namely dynamic mechanical allodynia and hyperalgesia). We assessed large myelinated fibres with masticatory muscle electromyography and trigeminal reflexes (blink reflex and masseter inhibitory reflex) [4], and tested small myelinated and unmyelinated fibres (A δ - and C-fibres) with laser-evoked potentials [5]. We also investigated cutaneous innervation by measuring the intraepidermal nerve fibre (IENF) density after skin biopsy of the supraorbital regions. The methods used adhered to European Guidelines [6], and published recommendations [7, 8]. The blink reflex was evoked by electrical stimulation of the supraorbital nerve. EMG signals were recorded from the orbicularis oculi through surface electrodes. The masseter inhibitory reflex was evoked by electrical stimulation of the infraorbital and mental nerves, while the subjects were instructed to clench the teeth at maximum strength with the aid of auditory feedback. EMG signals were recorded from the masseter muscle through surface electrodes. To study laser-evoked potentials we used a previously reported technique [9]. The main A δ - and C-LEP complex, N2–P2, was recorded through disc electrodes from the vertex (Cz) referenced to the nose. We measured peak latency and amplitude (peak-to-peak) of the main N2–P2 vertex complex.

For sampling skin innervated by the trigeminal nerve, after local anaesthesia 2-mm punch biopsies were taken above the eyebrow. Samples were processed for bright-field immunohistochemistry, using antibodies against protein gene product (PGP) 9.5, as a marker for intraepidermal nerve fibres. Neurophysiological and IENF data were compared with normative ranges established in our laboratory.

Laboratory testing showed no abnormalities. Investigation for rheumatic disease, including rheumatoid factor, anti-dsDNA antibody, extractable nuclear antigen screening were normal. Computerised tomographic (CT) and magnetic resonance imaging (MRI) scans showed severe hemiatrophy

involving facial subcutaneous tissues and facial bones, but no brain lesions. Neurophysiological data and IENF density came within normal ranges, with no differences between normal and affected side (Figs. 1, 2).

Discussion

Our study showing that the standard reference techniques for assessing cutaneous innervation and trigeminal pathway function disclosed no abnormalities in a patient with PRS and facial pain suggest that in our patient this rare and disabling condition is not associated with trigeminal system damage. This implies that in this patient affected by PRS, the facial pain is not a neuropathic pain condition. The recent criteria for diagnosing neuropathic pain assume that a definite diagnosis of neuropathic pain requires confirmatory evidence from neurologic examination and laboratory investigation showing the damage of the somatosensory afferent pathway [10].

Previous studies raised the possibility that PRS-related pain is a neuropathic pain condition [1, 2]. In these studies the diagnosis of neuropathic pain relied on clinical examination and quantitative sensory testing (QST) abnormalities showing hyperalgesia and allodynia [2]. Although QST abnormalities are also found in non-neurological diseases and they cannot be taken as a conclusive demonstration of neuropathic pain [11, 12], and these studies did not perform an objective assessment of trigeminal afferent pathway, we cannot exclude that our patient presented with a different phenotype. Indeed the patient reported by Viana and colleagues also suffered from a severe, shooting pain resembling trigeminal neuropathic pain.

According to our data we hypothesise that in our patient PRS-related pain is a nociceptive pain condition that might arise from the musculoskeletal abnormalities. These abnormalities might be directly due to the immune-mediated damage of soft tissues and bone or a consequence of the

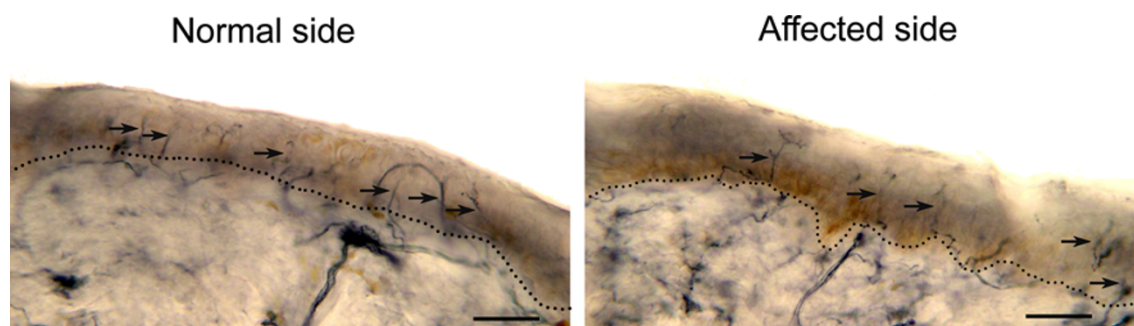
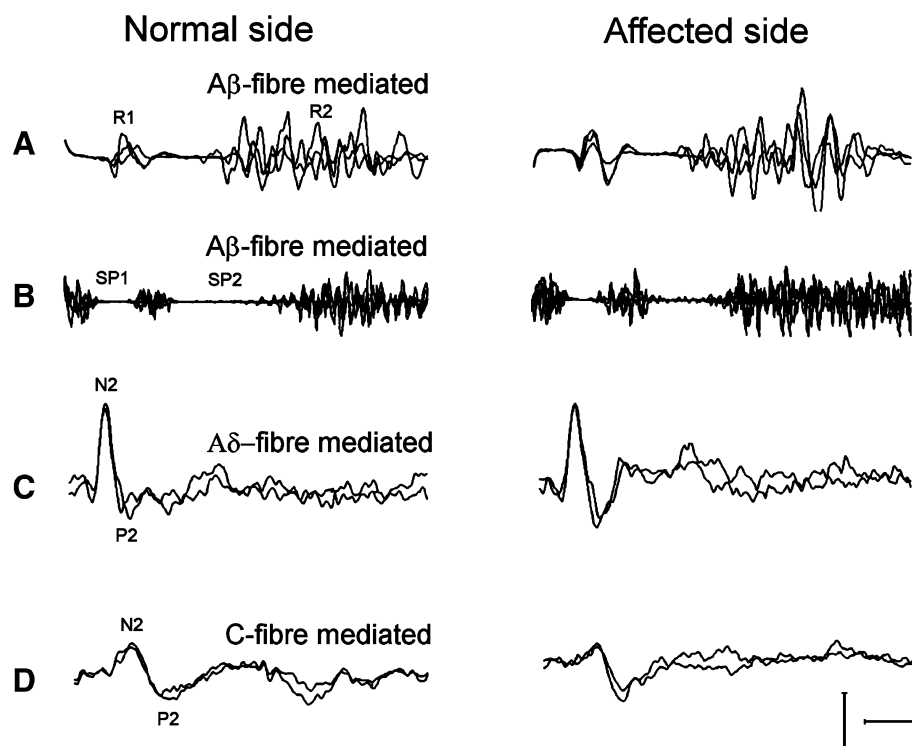


Fig. 1 Skin biopsy from the normal and affected supraorbital region. Intraepidermal nerve fibres (IENF) immunostained with the panaxonal marker anti-protein gene product 9.5 in a 50- μ m skin section.

Arrows indicate normal IENF crossing the dermo-epidermal junction. Scale bar 50 μ m. The IENF density was 13.1/mm at the normal supraorbital region and 15.1/mm at the affected supraorbital region

Fig. 2 Neurophysiological testing after stimulation of the normal and affected side. Blink reflex (a) after supraorbital nerve stimulation and masseter inhibitory reflex (b) after infraorbital nerve stimulation. Three trials superimposed. Calibration 10 ms/200 μ V for a, 20 ms/200 μ V for b. A δ - (c) and C-fibres (d) related laser-evoked potentials after supraorbital stimulation. Two averages of ten trials each superimposed. Calibration 200 ms/20 μ V. The latency and the amplitude of short (R1 and SP1) and long latency (R2 and SP2) trigeminal reflex responses, and vertex components (N2 and P2) of laser-evoked potentials were within normal ranges, with no side asymmetry



musculoskeletal impairment affecting temporomandibular joint and masticatory muscles.

Further studies assessing trigeminal pathway function are needed to verify whether PRS-related pain is invariably a nociceptive pain condition or different type of pain (namely neuropathic pain) may occur.

Conflict of interest None.

Open Access This article is distributed under the terms of the Creative Commons Attribution License which permits any use, distribution, and reproduction in any medium, provided the original author(s) and the source are credited.

References

- Viana M, Glastonbury CM, Sprenger T, Goadsby PJ (2011) Trigeminal neuropathic pain in a patient with progressive facial hemiatrophy (Parry-Romberg syndrome). *Arch Neurol* 68(7): 938–943
- Kumar AA, Kumar RA, Shantha GP, Aloogopinathan G (2009) Progressive hemi facial atrophy—Parry Romberg syndrome presenting as severe facial pain in a young man: a case report. *Cases J* 2:6776
- Moseley BD, Burrus TM, Mason TG, Shin C (2010) Neurological picture. Contralateral cutaneous and MRI findings in a patient with Parry-Romberg syndrome. *J Neurol Neurosurg Psychiatry* 81:1400–1401
- Biasiotta A, Cascone P, Cecchi R, Cruccu G, Iannetti G, Mariani A, Spota A, Truini A (2010) Iatrogenic damage to the mandibular nerves as assessed by the masseter inhibitory reflex. *J Headache Pain* 12(4):485–488
- Galeotti F, Truini A, Cruccu G (2006) Neurophysiological assessment of craniofacial pain. *J Headache Pain* 7(2):61–69
- Lauria G, Hsieh ST, Johansson O, Kennedy WR, Leger JM, Mellgren SI, Nolano M, Merkies IS, Polydefkis M, Smith AG, Sommer C, Valls-Solé J, European Federation of Neurological Societies; Peripheral Nerve Society (2010) European Federation of Neurological Societies/Peripheral Nerve Society Guideline on the use of skin biopsy in the diagnosis of small fiber neuropathy. Report of a joint task force of the European Federation of Neurological Societies and the Peripheral Nerve Society. *Eur J Neurol* 17:903–912
- Cruccu G, Aminoff MJ, Curio G, Guerit JM, Kakigi R, Mauguere F, Rossini PM, Treede RD, Garcia-Larrea L (2008) Recommendations for the clinical use of somatosensory-evoked potentials. *Clin Neurophysiol* 119:1705–1719
- Deuschl G, Eisen A (1999) Long-latency reflexes following electrical nerve stimulation. The International Federation of Clinical Neurophysiology. *Electroencephalogr Clin Neurophysiol Suppl* 52:263–268
- Truini A, Galeotti F, Haanpää M, Zucchi R, Albanesi A, Biasiotta A, Gatti A, Cruccu G (2008) Pathophysiology of pain in post-therapeutic neuralgia: a clinical and neurophysiological study. *Pain* 140:405–410
- Treede RD, Jensen TS, Campbell JN, Cruccu G, Dostrovsky JO, Griffin JW, Hansson P, Hughes R, Nurmikko T, Serra J (2008) Neuropathic pain: redefinition and a grading system for clinical and research purposes. *Neurology* 70(18):1630–1635
- Leffler AS, Kosek E, Hansson P (2010) The influence of pain intensity on somatosensory perception in patients suffering from subacute/chronic lateral epicondylalgia. *Eur J Pain* 4(1):57–71
- Haanpää M, Attal N, Backonja M, Baron R, Bennett M, Bouhassira D, Cruccu G, Hansson P, Haythornthwaite JA, Iannetti GD, Jensen TS, Kauppila T, Nurmikko TJ, Rice AS, Rowbotham M, Serra J, Sommer C, Smith BH, Treede RD (2010) NeuPSIG guidelines on neuropathic pain assessment. *Pain* 152(1):14–27